

# Bass Extension **G Sub 1501**



Der G Sub 1501 ist ein universeller 15" Hochleistungssubwoofer in besonders flacher Bauweise. Mit 60 x 60 cm Grundmaß kann er kippstabil auch größere HiMid-Systeme im Stangenbetrieb aufnehmen und mit nur 40 cm Höhe leicht in bestehende Bühnenkonstruktionen integriert werden. Er überzeugt durch sein gutes Handling, sein tiefes und sattes Bassfundament sowie durch sein modernes Design.

## PRODUCT SPECIFICATIONS

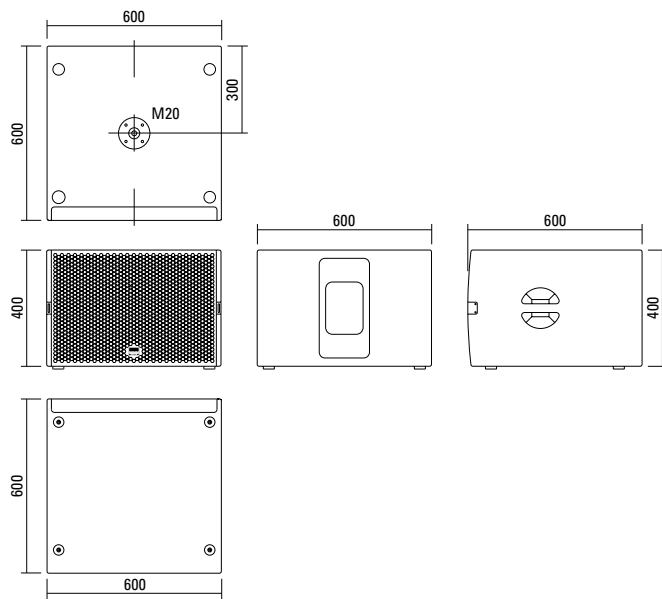
|   |  |
|---|--|
| <b>Speaker Components</b>                 | 15" Nd   |
| <b>Description</b>                        | Passive Bass Extension   |
| <b>Power</b> AES / Peak                   | 1000 W / 3000 W  |
| <b>Impedance</b> nominal                  | 8 $\Omega$   |
| <b>SPL</b> 1 W / Peak @ 1 m               | 100 dB / 135 dB  |
| <b>Usable Range</b>                       | 35 Hz - 220 Hz (- 6 dB)  |
| <b>Tuning Frequency</b> excursion minimum | 42 Hz  |
| <b>Connectors</b>                         | 2 x Neutrik Speakon NL4MP in/out<br>Coding: 1 +/- Loop thru, 2 +/- Sub<br>1 x Neutrik Speakon NL4MP in/out<br>Coding: 1 +/- Sub, 2 +/- loop thru |
| <b>Handles</b>                            | 2 x  |
| <b>Rigging / Fittings</b>                 | M20 on top<br>Wheelboard fittings  |
| <b>Weight</b>                             | 26,0 kg<br>(+ 6,0 kg wheelboard)   |
| <b>Size</b> height x width x depth        | 40,0 x 60,0 x 60,0 cm  |
| <b>Order No.</b>                          | <b>00620</b>   |



Fittings für Rollenwagen und robustes Wabenlochgitter.



## DIMENSIONS

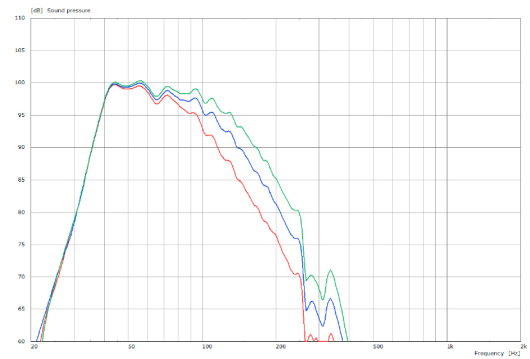


### Controller Setups:

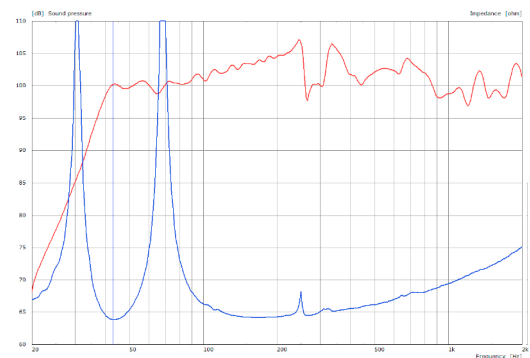
<http://www.seeburg.net/de/downloads>

## MEASUREMENTS

### Frequency Response with Presets



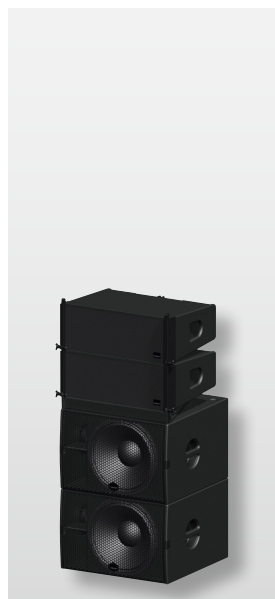
### Sensitivity 1 W @ 1 m + Impedance



## APPLICATIONS



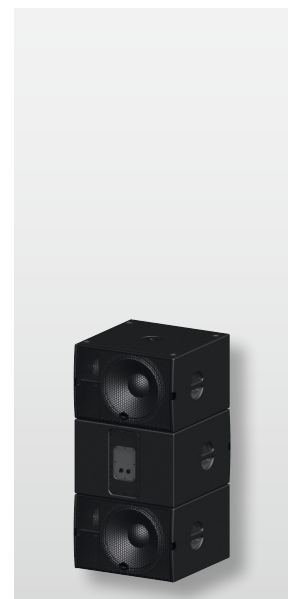
G Sub 1501 / GL 24



2 x G Sub 1501 / 2 x Galeo



G Sub 1501 / TSM 12



2 x G Sub 1501 dp / G Sub 1501  
Cardioid-Anordnung

## ACCESSORIES G Sub 1501

### Speaker Pole

M20, with wind up, K&M

Order No. **03023**



M20, adjustable, K&M

Order No. **03022**

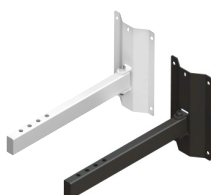


### Wall Mount

bar: 400 mm, max. load 40 kg,  
incl. (M10 x 70 mm socket head screw,  
M10 hex lock nut and flat washer)

Order No. **08130/F400/w** (RAL 9010)

Order No. **08130/F400**



### Ceiling Mount

for Subwoofer,  
2 parts, incl. screws

Order No. **08129**

Order No. **08129/w** (RAL 9010)



### MultiRigg™ light

version for fixed installations,  
for horizontal and vertical alignment,  
incl. accessories (2 x M10 x 20 socket  
head screws), max. load 50 kg

Order No. **01362**



### Cover

for G Sub 1501,  
by using wheel board  
Order No. **01239/WB**



### Cover

for G Sub 1501,  
without wheel board  
Order No. **01239**



### Wheel Board

for G Sub 1501,  
stackable, 6 kg  
Order No. **01267**

